

Figure 1. (1a) An opacity occupying the lower half of left hemithorax. (1b) A large soft tissue mass with rib destruction and calcifications on middle and lower part of left hemithorax and a pleural effusion in left hemithorax.

A 14 years old female patient admitted for a swelling under the left breast. Chest x-ray (Figure 1a) and thoracic computed tomography (Figure 1b) showed a mass on thoracic wall. A tru-cut needle biopsy named the mass as osteosarcoma and the mass was resected. Postoperative histopathological examination confirmed a chondroblastic type osteosarcoma (Figure 2).

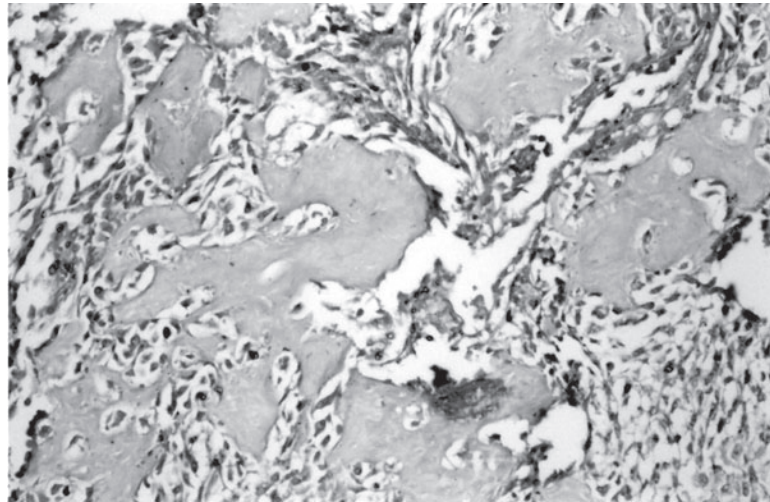


Figure 2: Microscopic appearance of osteosarcoma of rib with malignant osteoid.